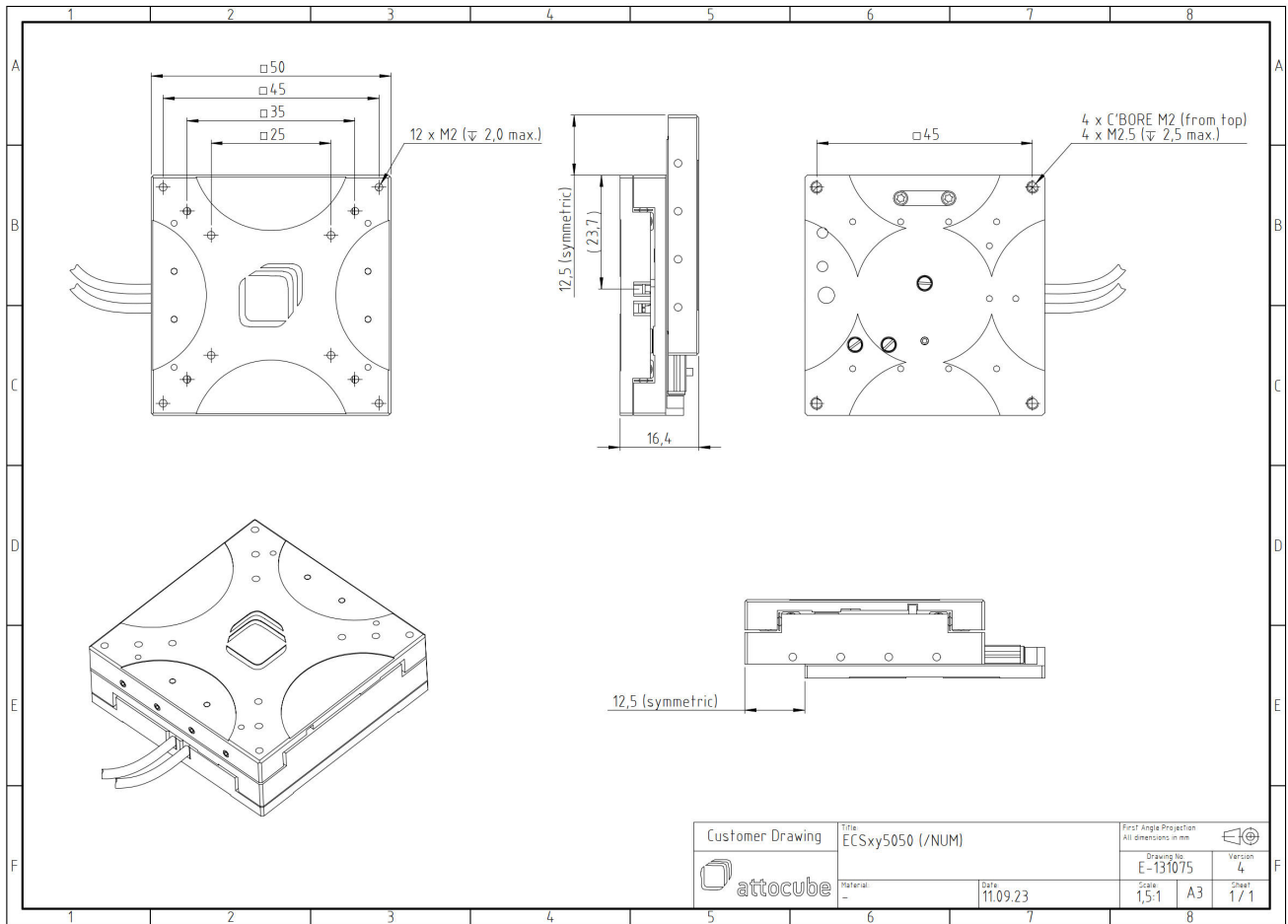


ECSxy5050/AI/NUM/RT

1011873

Technical Specifications

Size and Dimensions	
footprint; height	50 mm x 50 mm; 16.4 mm
maximum installation space	75 mm x 75 mm; 16.4 mm
weight	109 g
height	16.4 mm
Materials	
positioner body	aluminum
actuator	PZT ceramics
connecting wires	copper, jacket: RT: Fluoropolymer
Coarse Positioning Mode	
travel range (step mode)	25 mm
maximum drive velocity @ 300 K	4.5 mm/s
input voltage range	0 - 45 V
Fine Positioning Mode	
fine linear positioning range @ 300 K	1.6 μ m
fine positioning resolution	sub-nm
input DC voltage range	0 - 45 V
Position Encoder	
readout mechanism	optoelectronic sensor
encoded travel range	entire travel
sensor resolution	1 nm
sensor power (when measuring)	300 mW
repeatability	50 nm (bidirectional)
Load (@ ambient conditions)	
maximum load	2 kg
maximum dynamic force along the axis	2 N
General Specifications	
environment	/RT
operating temperature range	17 - 25 °C
operating humidity range	40 - 60%



Customer Drawing	Title: EC(Sxy5050 (/NUM)		First Angle Projection All dimensions in mm	
	Material: -		Drawing No. E-131075	Version 4
Date: 11.09.23		Scale: 1,5:1	A3	Sheet: 1 / 1