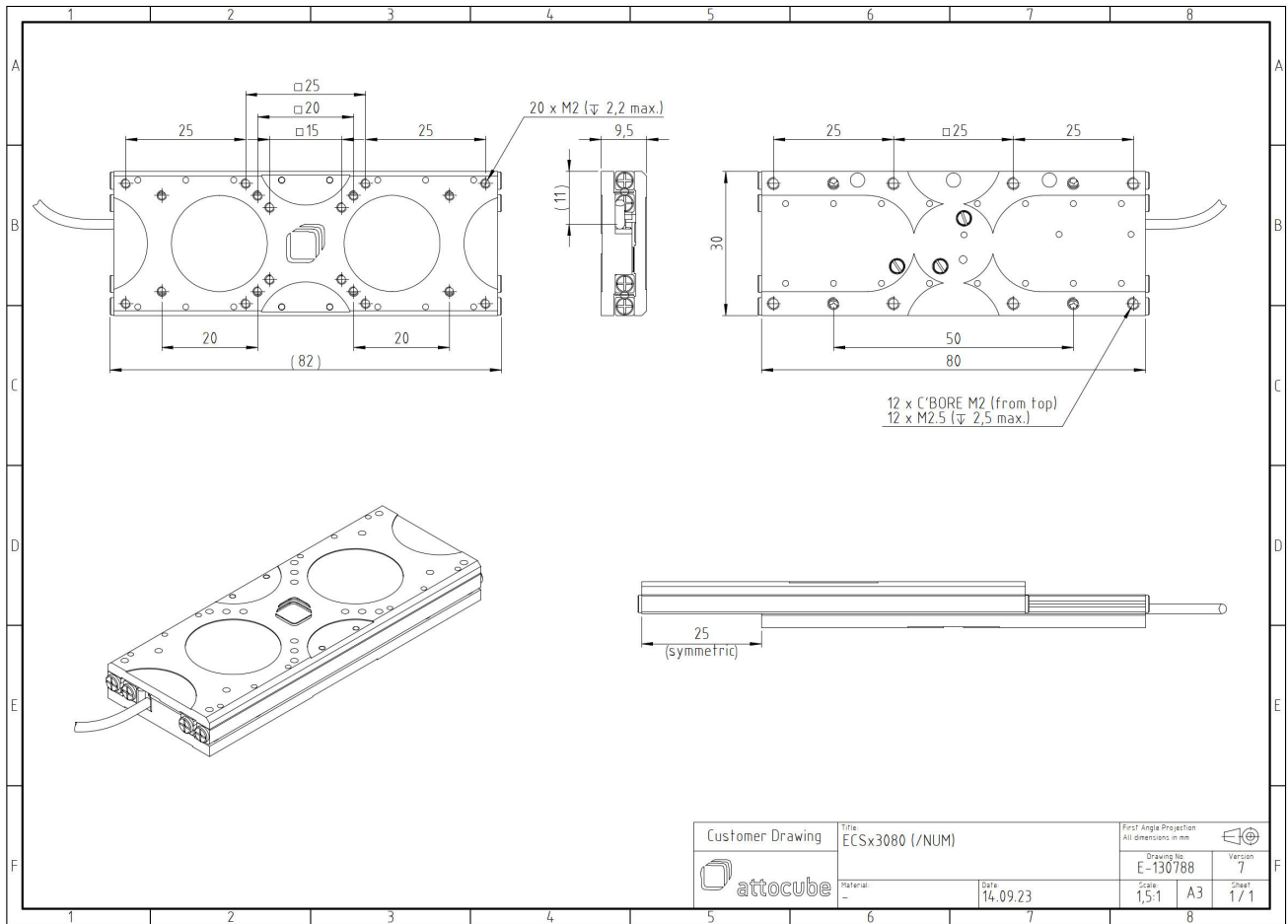


# ECSx3080/AI/NUM/RT

1005664

## Technical Specifications

<b>Size and Dimensions</b>	
footprint; height	30 mm x 80 mm; 9.5 mm
maximum installation space	30 mm x 131.6 mm; 9.5 mm
weight (aluminium version)	78 g
height	9.5 mm
<b>Materials</b>	
positioner body	aluminum
positioner body (/HV, /UHV)	stainless steel
actuator	PZT ceramics
connecting wires	copper, jacket: RT: PTFE, HV/UHV: fiberglass
<b>Coarse Positioning Mode</b>	
travel range (step mode)	50 mm
maximum drive velocity @ 300 K	4.5 mm/s
input voltage range	0 - 45 V
<b>Fine Positioning Mode</b>	
fine linear positioning range @ 300 K	1.6 $\mu$ m
fine positioning resolution	sub-nm
input DC voltage range	0 - 45 V
<b>Position Encoder</b>	
readout mechanism	optoelectronic sensor
encoded travel range	entire travel
sensor resolution	1 nm
sensor power (when measuring)	300 mW
repeatability	50 nm (bidirectional)
<b>Load (@ ambient conditions)</b>	
maximum load	2 kg
maximum dynamic force along the axis	1 N
<b>General Specifications</b>	
environment	/RT
operating temperature range	17 - 25 °C
operating humidity range	40 - 60%



Customer Drawing	Title	ECSx3080 (/NUM)		First Angle Projection All dimensions in mm	
	Material	Date	14.09.23	Drawing No.	Version
				E-130788	7
				Scale	Sheet
				1,5:1	A3 1 / 1