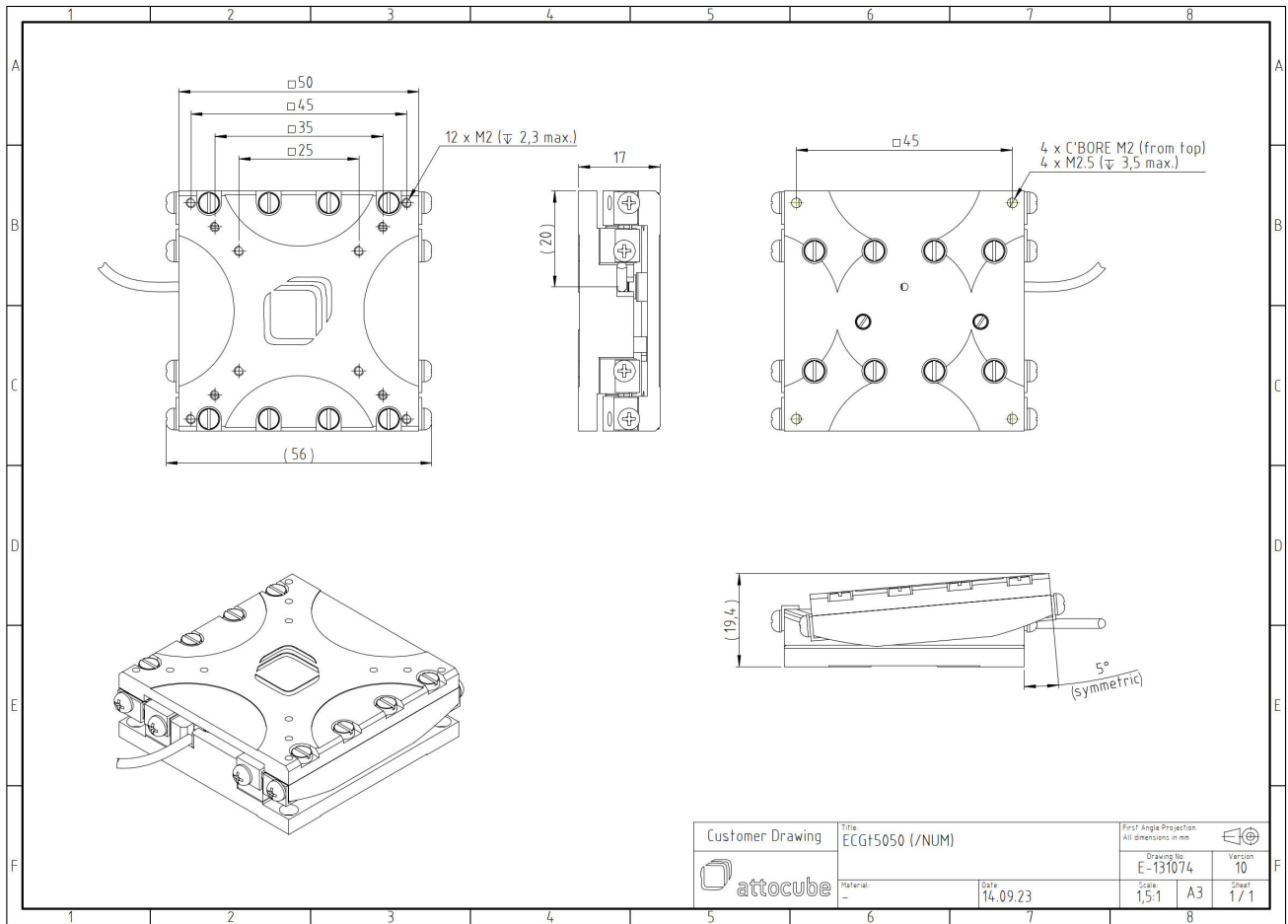


ECGt5050/AI/NUM/RT

1006215

Technical Specifications

Size and Dimensions	
footprint; height	50 mm x 50 mm; 17 mm
distance center of rotation to bottom	77 mm
maximum installation space	50 mm x 67.6 mm; 19.4 mm
weight (aluminium version)	137 g
height	17 mm
Materials	
positioner body	aluminum
positioner body (/HV, /UHV)	stainless steel
actuator	PZT ceramics
connecting wires	copper, jacket: RT: PTFE, HV/UHV: fiberglass
Coarse Positioning Mode	
travel range (step mode)	10 °
maximum drive velocity @ 300 K	3 °/s
input voltage range	0 - 45 V
Fine Positioning Mode	
fine angular positioning range @ 300 K	1.4 m°
fine positioning resolution	μ°
input DC voltage range	0 - 45 V
Position Encoder	
readout mechanism	optoelectronic sensor
encoded travel range	entire travel
sensor resolution	1 μ°
sensor power (when measuring)	300 mW
repeatability	50 μ° (bidirectional)
Load (@ ambient conditions)	
maximum load	1 kg
maximum dynamic torque around axis	7 Ncm
General Specifications	
environment	/RT



Customer Drawing	Title: ECG+5050 (/NUM)		First Angle Projection All dimensions in mm	
	Material: --		Drawing No: E-131074	Version: 10
Date: 14.09.23		Scale: 1,5:1	A3	Sheet: 1 / 1