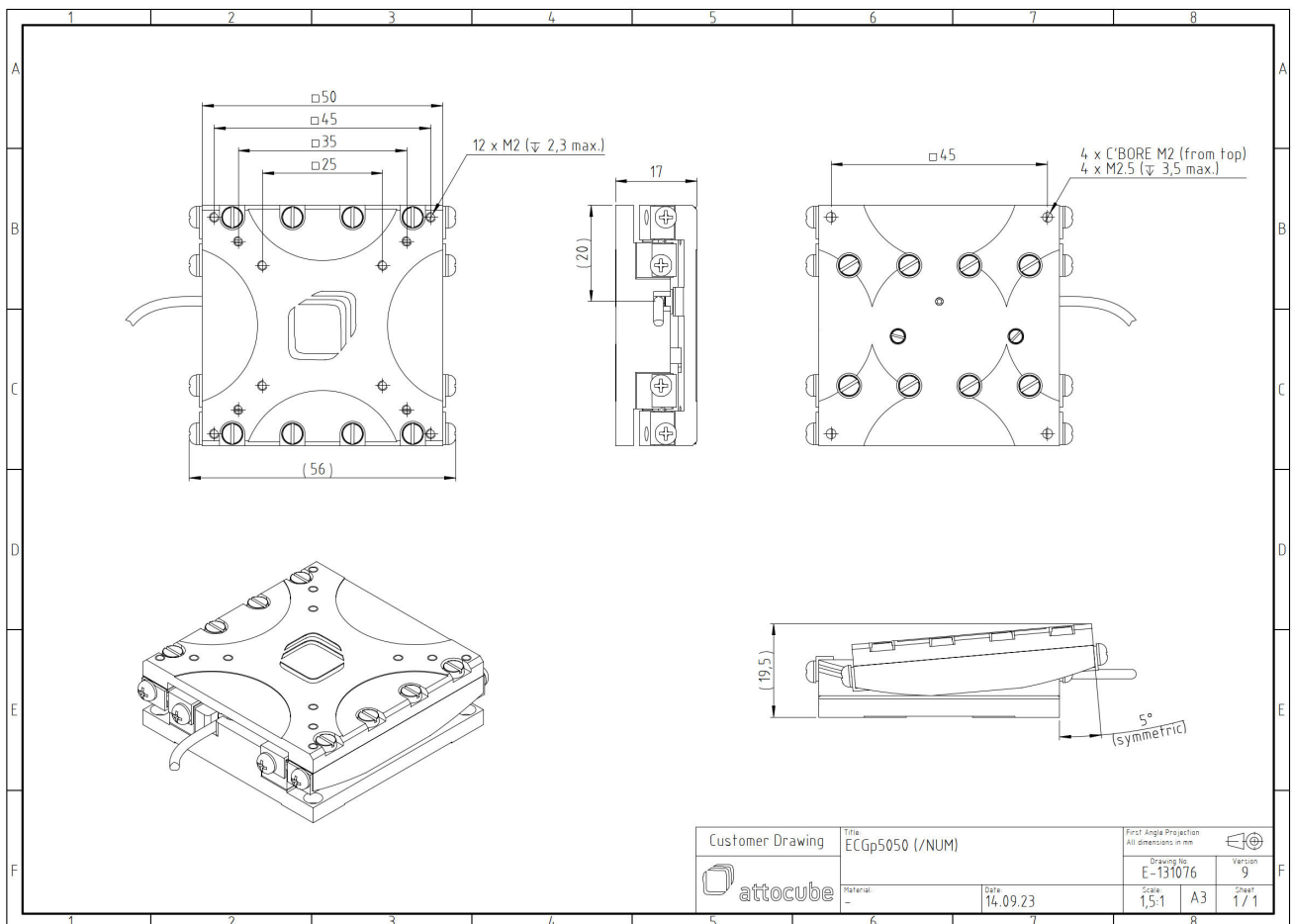


ECGp5050/AI/RT

1006222

Technical Specifications

Size and Dimensions	
footprint; height	50 mm x 50 mm; 17 mm
distance center of rotation to bottom	94 mm
maximum installation space	50 mm x 69.8 mm; 19.5 mm
weight (aluminium version)	137 g
height	17 mm
Materials	
positioner body	aluminum
positioner body (/HV, /UHV)	stainless steel
actuator	PZT ceramics
connecting wires	copper, jacket: RT: PTFE, HV/UHV: fiberglass
Coarse Positioning Mode	
travel range (step mode)	10 °
maximum drive velocity @ 300 K	3 °/s
input voltage range	0 - 45 V
Fine Positioning Mode	
fine angular positioning range @ 300 K	1.1 m°
fine positioning resolution	μ°
input DC voltage range	0 - 45 V
Load (@ ambient conditions)	
maximum load	1 kg
maximum dynamic torque around axis	8.7 Ncm
General Specifications	
environment	/RT
operating temperature range	17 - 25°C
operating humidity range	40 - 60%



Customer Drawing	Title ECGp5050 (/NUM)	First Angle Projection All dimensions in mm
	Material: -	Scale: 1,5:1
	Date: 14.09.23	Version: 9
		Cheet: 17/1