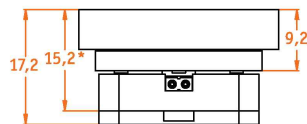
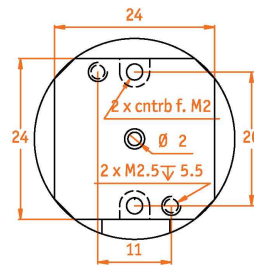
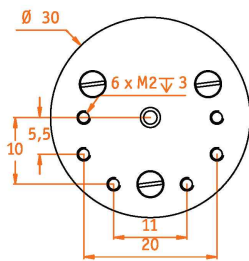


ANR101/RT - rotator (360° endless)

1002210

Technical Specifications

Size and Dimensions	
footprint; height	24 mm x 24 mm; 15.2 mm
weight	36 g
Materials	
positioner body	titanium
actuator	PZT ceramics
connecting wires	insulated twisted pair, copper
Coarse Positioning Mode	
travel range (step mode)	360 ° endless
maximum drive velocity @ 300 K	~ 30 °/s
input voltage range	0 - 60 V
Fine Positioning Mode	
fine angular positioning range @ 300 K	50 m°
fine positioning resolution	μ°
input DC voltage range @ 300 K	0 - 120 V
Load (@ ambient conditions)	
maximum load	100 g
maximum dynamic torque around axis	0.8 Ncm
General Specifications	
environment	/RT



* height without base plate (only mountable from below)