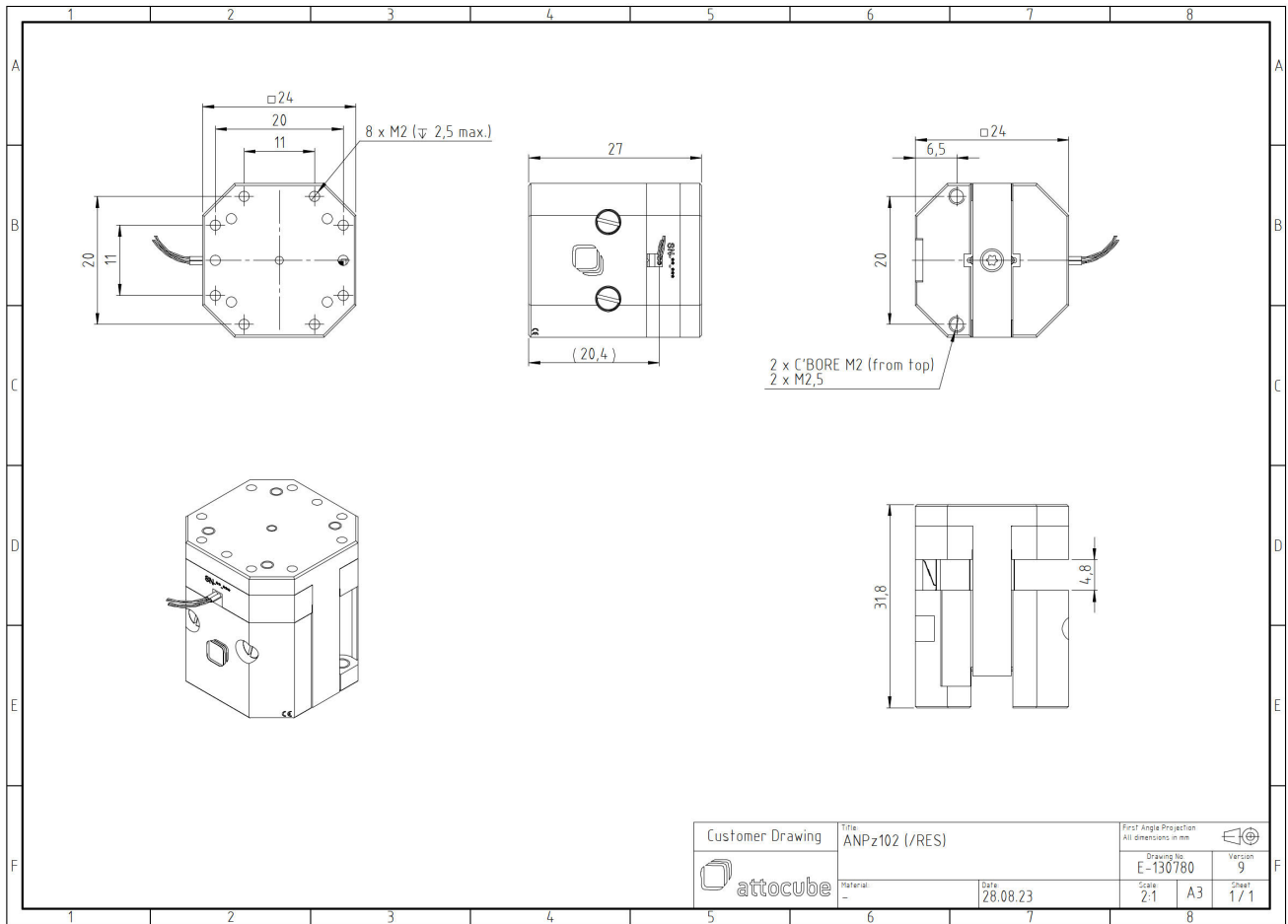


ANPz102/RES/LT - linear z- nanopositioner

1009461

Technical Specifications

Size and Dimensions	
footprint; height	24 mm x 24 mm; 27 mm
maximum installation space	24 mm x 24 mm; 32 mm
weight	55 g
height	27 mm
Materials	
positioner body	titanium
actuator	PZT ceramics
connecting wires	insulated twisted pair, copper
Coarse Positioning Mode	
travel range (step mode)	4.8 mm
maximum drive velocity @ 300 K	~ 3 mm/s
input voltage range	0 - 60 V
Fine Positioning Mode	
fine linear positioning range @ 300 K	3.5 μm
fine linear positioning range @ 4 K	0.5 μm
fine positioning resolution	sub-nm
input DC voltage range @ 300 K	0 - 100 V
input DC voltage range @ 4 K	0 - 150 V
Position Encoder	
readout mechanism	resistive sensor
encoded travel range	full travel
sensor resolution	~ 200 nm
sensor power (when measuring)	0.01 - 1 mW
repeatability	1..2 μm (unidirectional)
Load (@ ambient conditions)	
maximum load	200 g
maximum dynamic force along the axis	5 N
General Specifications	
environment	/LT



Customer Drawing	Title	ANPz102 (RES)		First Angle Projection All dimensions in mm	
	Material	Date	28.08.23	Drawing No.	Version
attocube		Scale	2:1	A3	Sheet 1 / 1