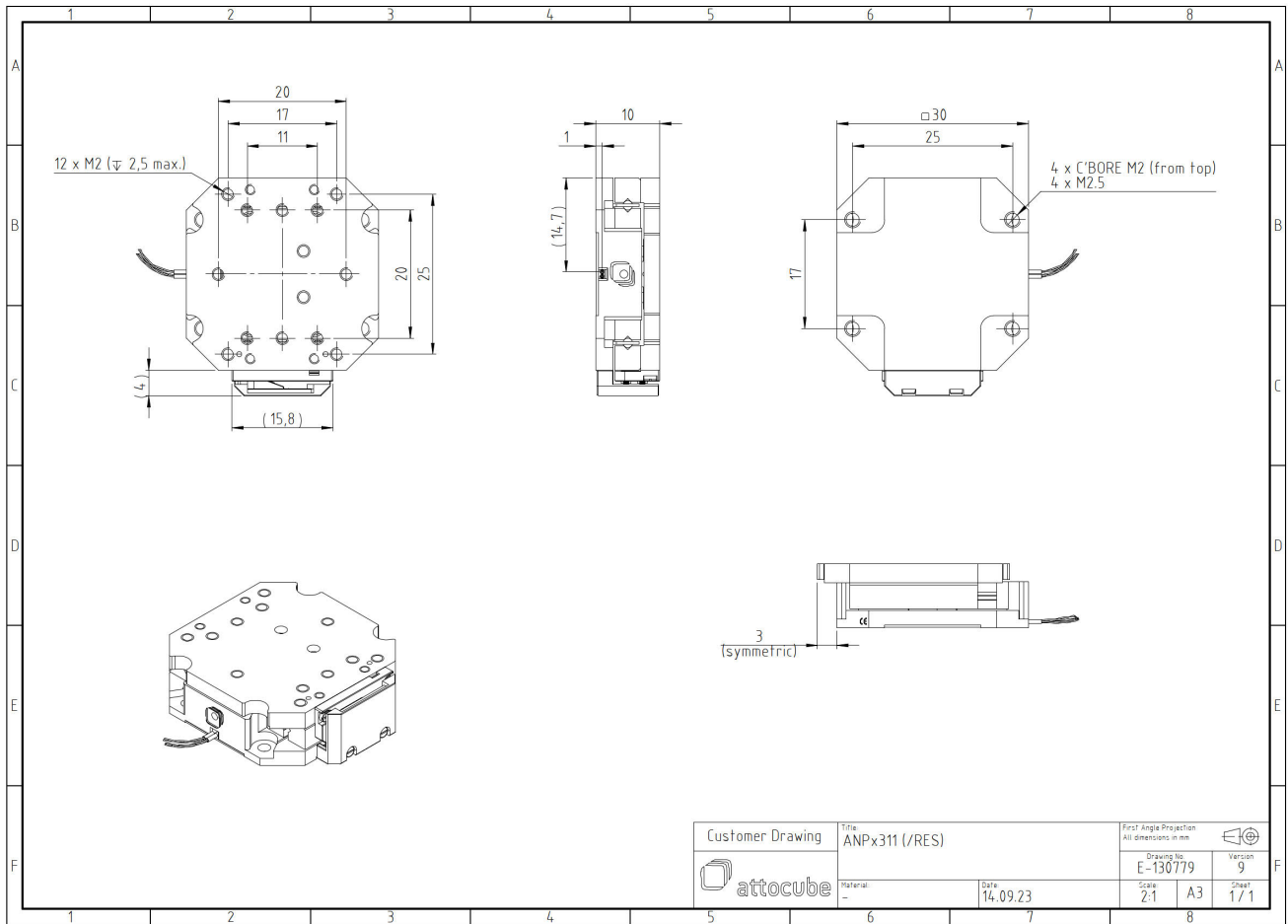


ANPx311/HL/RES/LT - linear x-nanopositioner

1008948

Technical Specifications

Size and Dimensions	
footprint; height	34 mm x 30 mm; 10 mm
maximum installation space	34 mm x 36 mm; 10 mm
weight	32 g
height	10 mm
Materials	
positioner body	titanium
actuator	PZT ceramics
connecting wires	insulated twisted pair, copper
Coarse Positioning Mode	
travel range (step mode)	5.8 mm
maximum drive velocity @ 300 K	~ 3 mm/s
input voltage range	0 - 60 V
typical actuator capacitance @ 300 K [μ F]	1.6
typical minimum step size @ 300 K	100 nm
Fine Positioning Mode	
fine linear positioning range @ 300 K	5 μ m
fine linear positioning range @ 4 K	0.8 μ m
fine positioning resolution	sub-nm
input DC voltage range @ 300 K	0 - 100 V
input DC voltage range @ 4 K	0 - 150 V
Position Encoder	
readout mechanism	resistive sensor
sensor resolution	~ 200 nm
repeatability	1..2 μ m (unidirectional)
Load (@ ambient conditions)	
maximum load	2 kg
maximum dynamic force along the axis	2 N
General Specifications	
environment	/LT
min. first natural frequency	2600 Hz



Customer Drawing	Title: ANPx311 (/RES)		First Angle Projection All dimensions in mm	
	Material: --		Drawing No: E-130779	Version: 9
Date: 14.09.23		Scale: 2:1	A3	Sheet: 1 / 1