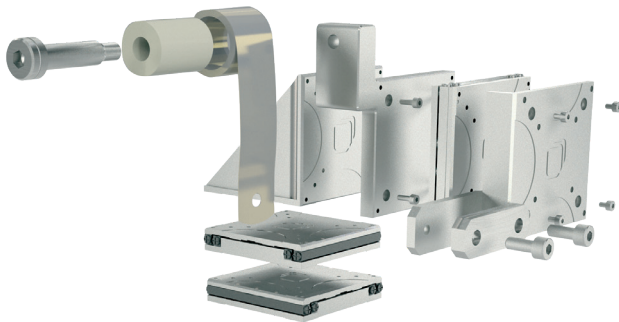


Accessories

ECS Lift 3030/5050

For lifting high loads exceeding the capabilities of the ECSz5050 attocube offers the ECS Lift upgrade kit. It consists of front and backplate for an existing ECSx positioner and three different constant force springs compensating the specified load. There are two versions available for ECSx3030 and ECSx5050 with a different

set of springs each. You can easily change between any of the three springs delivered with the ECS Lift kit. ECS Lift units can be used in all working conditions as specified for the used ECS positioners. The load compensated is independent of the vacuum conditions. The resulting force can be tuned to your application by adding balance weights.



Technical Specifications		
material	stainless steel, PEEK	
temperature range	0 .. 150 °C	
minimum pressure	5E-11 mbar; ECS Lift units can be used in all working conditions as specified for the used ECS positioners	
scope of delivery	mechanical support unit, spring add-on packages for all listed constant force options	
	ECS Lift/3030	ECS Lift/5050
footprint base plate	46.5 x 63 mm ²	68.5 x 92 mm ²
height	74 mm	94.75 mm
weight (mechanical parts)	94.8 g	279.5 g
weight (spring add-on)	13 - 60 g	
weight (parts to be lifted)	56.3 g	153.3 g
dynamic force	specified by used ECS positioner model	
constant force (independent from environment conditions)	option 1: 5 N (± 20%) option 2: 8.8 N (± 20%) option 3: 14.7 N (± 20%)	option 1: 10.5 N (± 20%) option 2: 17.9 N (± 20%) option 3: 22 N (± 20%)
Article	Art. No.	
ECS Lift/3030	1011297	
ECS Lift/5050	1011298	